



1 Rockmart 113 Business Park

Rockmart 113 Business Park

Rockmart, GA 30153, Polk County



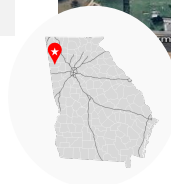
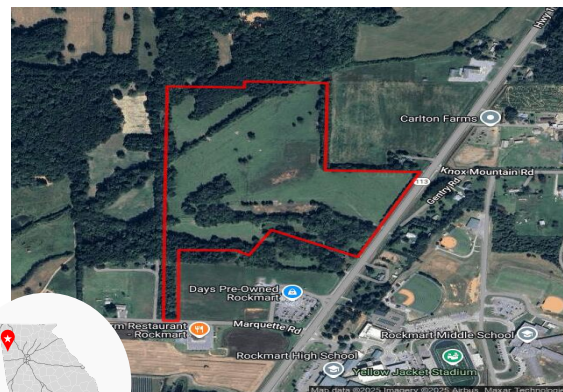
Economic Development

1



Total Acres:	60 AC	Water on Site:	Yes
Remaining Acres:	60 AC	Water Main Size:	12 IN
Largest Tract:	60 AC	Sewer on Site:	Yes
Sale or Lease:	Sale	Sewer Main Size:	6 IN
Zoning:	Agricultural	Gas on Site:	No
Former Use:	Agricultural	Gas Main Size:	2 IN
GRAD Site:	No	Electric Provider:*	Georgia Power

* Customer will have choice of provider if load is above 900 kW



Source: Georgia Power Economic Development



Job Tax Credit:	\$4,000/job
County Millage Rate:	21.082
County Property Tax:	\$8.43 per \$1000 FMV
Total Sales Tax:	7%
County Freeport:¹	1: 100% 2: 100% 3: 100% 4: 0%

Incentive Zones
Foreign Trade Zone
New Market Tax Credit

Sources: Georgia Dept. of Revenue, Georgia Dept. of Community Affairs



International Airport:	Hartsfield-Jackson Atlanta International, 44 miles	Port 1:	Port of Savannah, 263.3 miles
Interstate:	I 75, 16.9 miles	Port 2:	Port of Brunswick, 284.8 miles
Rail Provider:	Not rail served	Inland Port:	Appalachian Regional Inland Port, 61.8 miles
		Intermodal:	Whitaker Rail Yard, 24.7 miles

Sources: Georgia Dept. of Transportation, Georgia Ports Authority



Workforce data is based on drive times from property unless otherwise noted	Laborforce ²		Unemployment Rate		Average Weekly Wage	
	30 Minutes:	45 Minutes:	Polk County:	Georgia:	Polk County:	Georgia:
	112,890	228,405	4.3%	3.5%	\$897	\$1,064
	996,817		4%		\$976	\$1,161

Jobs by Industry



* Includes agriculture, mining, utilities, construction, retail trade, finance & insurance, real estate, admin & support services, educational services, arts & entertainment, accommodation & food services, and other services.

Sources: Georgia Dept. of Labor, Lightcast

¹ Level 1 - Business inventory is exempt from state property taxes for the following categories - 1: raw materials, 2: finished goods, 3: finished goods awaiting shipment outside of GA, 4: fulfillment center stock in trade

² Based on county centroids within user defined area or drive time ³ Includes county and adjoining counties

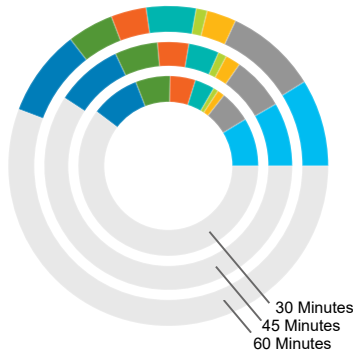
This information is provided "as is" without warranty of any kind either express or implied.

Rockmart 113 Business Park

Rockmart, GA 30153, Polk County



Jobs by Occupation



	30 Mins.	45 Mins.	60 Mins.	Median Hourly Wage 60 Mins.
Management Occupations	10,458	35,724	117,071	\$41.61
Business & Financial Operations Occupations	6,888	29,863	122,978	\$37.16
Computer & Mathematical Occupations	1,567	8,518	39,687	\$46.97
Architecture & Engineering Occupations	1,084	4,760	14,832	\$38.75
Healthcare Practitioner Occupations	4,260	17,032	66,553	\$41.92
Installation, Maintenance, & Repair Occupations	5,488	17,440	47,364	\$23.97
Production Occupations	7,492	24,045	61,954	\$18.99
Transportation & Material Moving Occupations	10,566	37,528	116,176	\$18.54
Other *	72,634	254,068	739,213	N/A

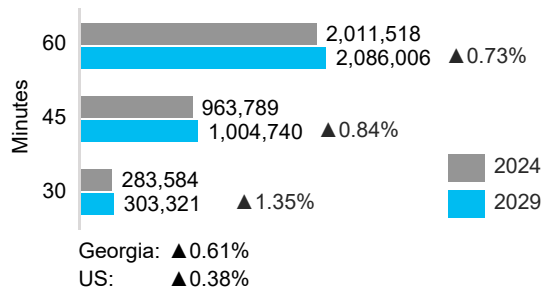
* Includes life & physical sciences, community & social services, legal, educational, arts & entertainment, healthcare support, protective services, food services, buildings maintenance, personal care, sales, office support, farming, construction, and military occupations.

Source: Lightcast

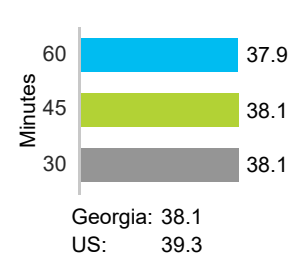
Demographics

Demographic data is based on drive times from property

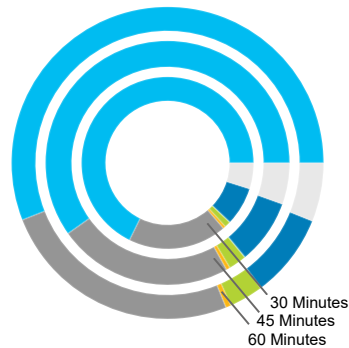
Population & Projected Annual Change



Median Age

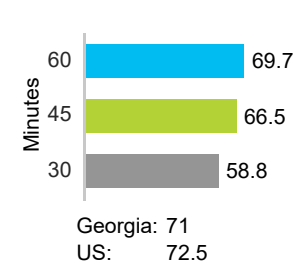


Population by Race

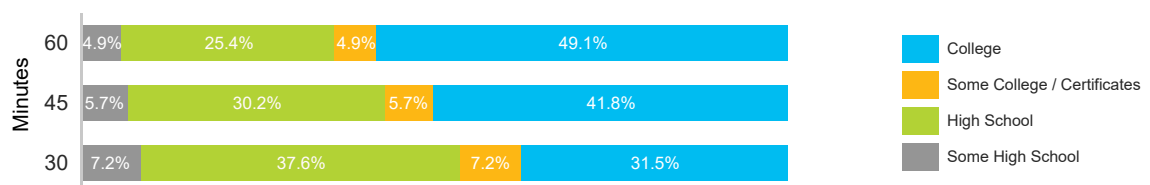


	30 Mins.	45 Mins.	60 Mins.
White	67.7%	59.8%	56.0%
Black	18.5%	23.2%	25.2%
American Indian	0.5%	0.5%	0.5%
Asian	1.1%	2.4%	3.5%
Pacific Islander	0.1%	0.1%	0.1%
Multiracial	4.9%	5.5%	6.1%
Other	7.2%	8.5%	8.7%

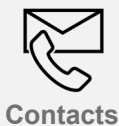
Diversity Index⁴



Educational Attainment⁵



Source: ESRI 2024



Contacts

Property Contact:
Chris Thomas
Development Authority of Polk County
770-684-5686
chris@choosepolk.com

For more details, contact your local Georgia Power Regional Economic Development Manager:
Tamara Brock
Georgia Power Economic Development
706-477-7009
twbrock@southernco.com

⁴ Captures the racial and ethnic diversity of an area - the higher the number, the greater likelihood of meeting someone of a different race or ethnicity
⁵ Percent of population 25 and older

Rockmart 113 Business Park

Rockmart, GA 30153, Polk County



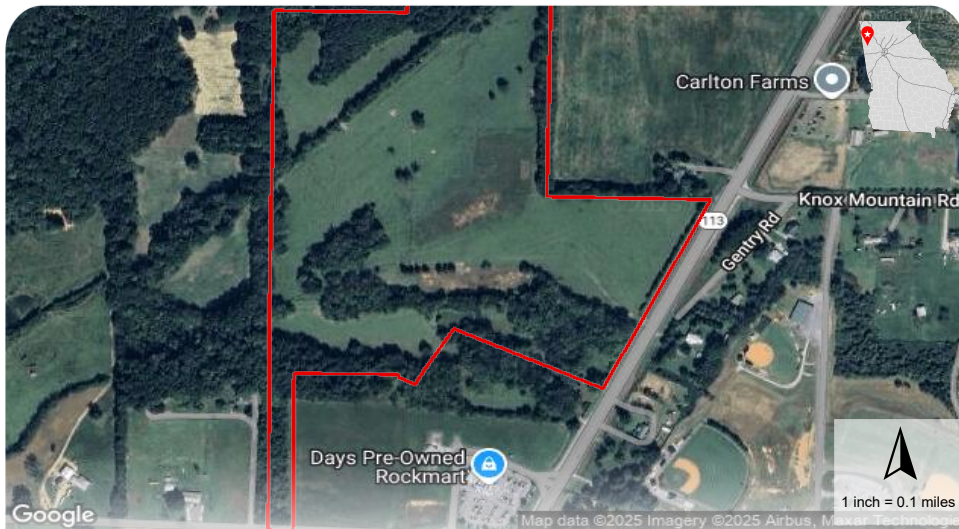
Economic Development

1

Location Map



Aerial Map



Rockmart 113 Business Park

Rockmart, GA , Polk County



Economic Development

30,45,60 Minutes Drive Time Area

